

MOLYNX SYSTEMS



Washer Unit CAHL4010/4011-WU



Installation guide

Before attempting to connect or operate this product, please read these instructions completely

Williams Electronics Ltd
Tel: +44 (0)2921 660 234

www.w-e.co.uk
Fax : +44 (0)2921 660 270,

Email : sales@w-e.co.uk



Whilst every effort has been made to ensure that all information contained in this document is correct at the time of publication, due to our policy of continuous product improvement, the company reserves its right to change any information contained herein without notice.

Williams Electronics Limited trading as MOLYNX Systems.

Table of Contents

1	Safety	2
1.1	Important Notes	2
2	Standards and Guidelines.....	3
2.1	EU Directive	3
3	Technical Data.....	3
3.1	Specifications.....	3
4	Maximum Nozzle Height.....	4
5	Key to parts	4
6	Scope of delivery	4
7	Description of Equipment	4
8	Installation and Operation.....	5
8.1	Installation	5
8.2	Operation	6
9	Maintenance and Service	7
10	Troubleshooting.....	7
11	Disposal	8

1 Safety

1.1 Important Notes

SELECT SUITABLE EQUIPMENT!

Please ensure that all equipment is suitable for the application and the environment for which it is intended. Ensure all applicable specifications are adhered to. Please take particular care that inter-connected equipment is fully compatible with each other and suitable for such use. Check load ratings, dimensions, etc.

SECURELY MOUNT THE ASSEMBLY!

Ensure that each part of the assembly is securely attached. Always use the recommended or supplied fixing screws. Failure to comply with the aforementioned could result in the unit coming loose from the supporting structure and falling, with resultant damages or injury to anyone or anything struck by the falling unit.

INSTALL CORRECTLY!

The installation should be made by a qualified installer. Specific tools may be required for installation purposes dependant upon the site in which the assembly is to be installed. Use the appropriate tools. Refer to local and national standards for wiring and follow recommendations. The installation should be in compliance with local codes. Check that correct cable types are used.

2 Standards and Guidelines

2.1 EU Directive

The product meets the requirements of:

EU Directive 2014/30/EU on electromagnetic compatibility

Conformity with the European Directive 2014/30/EU is demonstrated by compliance with the following standards:

Emitted interference:	EN 61000-6-3
Resistance to interference:	EN 50130-4

EU Directive 2014/35/EU “Low-Voltage Directive”

Compliance with the European Directive 2014/35/EU has been proven by testing according to the following standard:

Safety:	EN 60335-1
---------	------------

3 Technical Data

3.1 Specifications

Mechanical

Length / Width / Height	230 mm / 190 mm / 300 mm
Weight	Empty: 2 kg : Full: 7 kg
Material	Wall bracket: Stainless steel Pump unit case: Polycarbonate Washer container: H.D.P.E thermoplastic

Electrical

Supply voltage	CAHL4010-WU: 230 V AC, 50 Hz CAHL4011-WU: 24 V AC (± 2 V), 50 Hz
Operating power	CAHL4010-WU: 52 W CAHL4011-WU: 52 W
Supply cable (not included in the delivery)	Circular, flexible 2-core cable, approved for outdoor use Outside diameter: 5 mm min., 13 mm max. No earth connection should be made. Conductor size CAHL4010-WU: 0.5 mm ² minimum Conductor size CAHL4011-WU: 0.75 mm ² minimum (Unless local codes require greater)
External fuse/ Circuit breaker	CAHL4010-WU: 230 V AC – 3 A CAHL4011-WU: 24 V AC – 5 A
Operating temperature	-10 to +40 °C (with suitable strength car windscreen washer antifreeze)
Non-operating temperature	-20 to +50 °C
Ingress protection	IP66

4 Maximum Nozzle Height

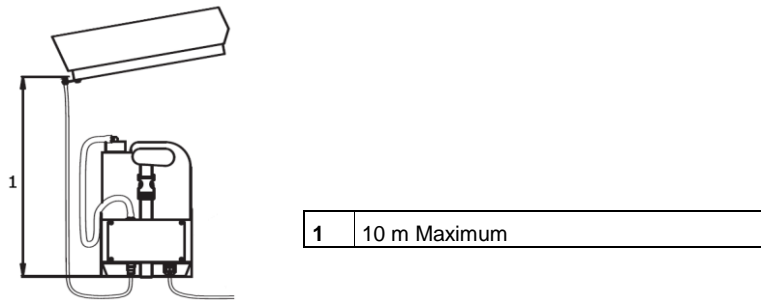


Fig. 1 Mechanical dimensions

5 Key to parts

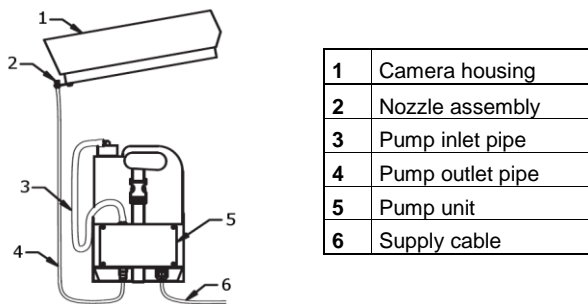


Fig. 2 Key to parts

6 Scope of delivery

<ul style="list-style-type: none">● Pump unit with lid	Small parts kit contents
<ul style="list-style-type: none">● 5 litre container	<ul style="list-style-type: none">● Washer nozzle bracket
<ul style="list-style-type: none">● Support bracket with retaining strap	<ul style="list-style-type: none">● Nozzle assembly
<ul style="list-style-type: none">● Installation Guide	<ul style="list-style-type: none">● Black threaded outlet adaptor
<ul style="list-style-type: none">● Container cap and inlet pipe assembly	<ul style="list-style-type: none">● M4x10 Stainless steel screws (2 x)
<ul style="list-style-type: none">● 5 mm bore tubing (600 mm long)	<ul style="list-style-type: none">● M4 Fibre washers (2 x)
<ul style="list-style-type: none">● 3 mm bore tubing (10 metres long)	
<ul style="list-style-type: none">● Small parts kit	

7 Description of Equipment

The washer unit has been designed to operate with any Molynt camera housing of types CHSL4010 & CHSL4011 with fitted wiper. It assists in keeping the camera housing window clean. The operation of the washer can be controlled from a control unit via a telemetry receiver. A self-resetting TOC is incorporated to prevent overheating.

8 Installation and Operation

8.1 Installation

1. A readily accessible disconnect device shall be incorporated in the building installation wiring. In compliance with IEC60335 this device should ensure all-pole disconnection and contact separation, providing full disconnection under overvoltage category III.
2. As part of the building installation protect the unit via a fuse or circuit breaker rated at 3 A for CAHL4010-WU 230 V AC or 5 A for CAHL4011-WU 24 V AC.
3. Mount the washer container bracket to a suitable surface. The type of screws will depend upon the mounting surface material. The position of the container should be in accordance with Fig. 2.



NOTE

Do not mount the pump unit more than 10 metres vertically below the camera housing, as this will impair pump operation.

4. Remove the pump unit lid (4 off M4 Pozi pan screws).
5. Insert the supply cable through the loosened sealing entry gland and cord clamp. The cable must be circular with an outside diameter in the range 5 to 13 mm. During installation of the cable, ensure continued compliance with protection class IP66.
6. Strip the outer insulation back approx. 70–100 mm. Strip both conductors to the required length (approx. 10 mm). Fit ferrules if required for multi strand cable. Connect to the 2 way terminal block (polarity unimportant).
7. Pull cable back through the gland until the outer sheath protrudes 20 mm min beyond the cord clamp. Tighten both cord clamp screws. Tighten the gland sealing nut.
8. Replace the pump unit lid (4 off M4 Pozi pan screws).
9. Screw the black outlet adaptor into the pump outlet at the bottom of the pump unit. Do not overtighten. Do not remove the central “loose” insert.
10. Insert the suction tube with filter into the container and fit screw cap.
11. Attach the flexible 5 mm bore tube to the elbow connector at the container cap.
12. Attach the other end of the 5 mm bore tube to the white (inlet) connector at the top of the pump unit.
13. Mount the washer nozzle bracket assembly onto the camera housing using the two M4 x 10 mm screws and fibre washers supplied, as shown in Fig. 3. Ensure that the screw penetration is not too great before inserting. Fit the 3 mm bore tube to the nozzle inlet taking care not to distort the bracket



NOTE

Note that some of steps 9 – 12 may have already been carried out during manufacture.

**NOTE**

Ensure that the nozzle is positioned so that the hole is facing the housing window.

14. Lower the pipe (tying may be required to provide support), cut to length if required and push the lower end into the black (outlet) connector on the pump unit. Ensure that the pipe is inserted until it “bottoms” in the connector (15 mm nom). Do not remove the central “loose” insert.

**WARNING****Danger of explosion due to alcoholic liquids**

There is a risk of explosion when filling the washer container with alcoholic liquids.

- Do not fill the washer container with alcoholic or highly flammable liquids.

15. Fill the washer container with clean water and suitable fluid (e.g. for car windscreens) with antifreeze type for winter operation.
16. Test the unit:
 - (a) Switch on the power to the camera head.
 - (b) Check the receiver power light is on.
 - (c) Set the receiver address switch to the washer test position and operate the receiver test button.
 - (d) The pump should operate and eject water to the camera-housing window.
 - (e) Switch off the receiver power.

For further connection detail refer to your receiver / controller installation instructions. Always refer to voltage label before applying power.

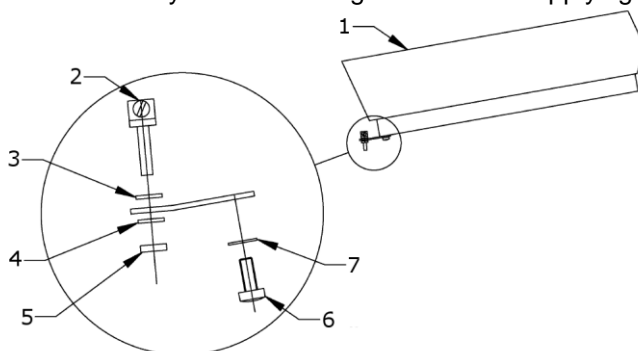


Fig. 3 Installation

1	Camera housing	5	Nut
2	Nozzle	6	M4 × 10 screw
3	Plastic washer	7	Fibre washer
4	Shakeproof washer		

8.2 Operation

1. Regularly check the level of cleaning fluid in the washer container.

**IMPORTANT****Risk of damage to the pump unit due to its running dry**

The pump unit may be damaged due to lack of water in the container.

- Regularly refill the washer container with cleaning fluid.

2. The container can be fully removed if required by carefully unbuckling the retaining strap. After filling this strap should be re-fastened.
3. The duty cycle (on time : off time) must not exceed 50 %. In addition, the pump must not be energised for a period longer than 1 minute at a time.

9 Maintenance and Service

The following maintenance guidelines should be observed.

1 month after installation and every 6 months thereafter	Check the tightness and security of all external fastenings
6 monthly checks	Check electrical cables and pipes for signs of wear. Replace where necessary. Check that the cables are not fouling on any obstruction.

NOTE



This installation guide cannot cover all conceivable cases of installation, operation or maintenance. Should you require further information or should special problems occur which are not discussed in adequate detail in the installation guide, please ask.

We must also point out that the contents of this installation guide do not constitute a part of an earlier or existing agreement. Neither do they constitute or amend any earlier or existing commitment or legal relationship. All obligations on the part of Molynx result from the relevant purchase agreement which also contains the complete and solely valid warranty regulations. This installation guide neither extends nor restricts these contractual warranty regulations.

10 Troubleshooting

In the event of failure check the other camera housing assembly functions for example, pan / tilt operation etc. This proves the receiver is working.

If the receiver is functioning check the correct output voltage to the pump is present at the junction box when operated via the control system (options 230 V AC or 24 V AC).

If this voltage is present check the pump is operating and that the hose pipes are connected correctly.

If the receiver is not functioning check the instructions provided with the receiver unit.

Prolonged usage of the pump motor may result in failure.

Do not operate the pump "dry".

Check that the hole of the nozzle is pointing at the camera housing glass.

If the pump has had an extensive run period its thermal cut-out may have operated. Allow the pump to cool down.

11 Disposal



■ All electrical and electronic products should be disposed of separately from the municipal waste stream via designated collection facilities appointed by the government or the local authorities.

The correct disposal and separate collection of your old appliance will help prevent potential negative consequences for the environment and human health. It is a precondition for reuse and recycling of used electrical and electronic equipment. For more detailed information about disposal of your old appliance, please contact your city office, waste disposal service.